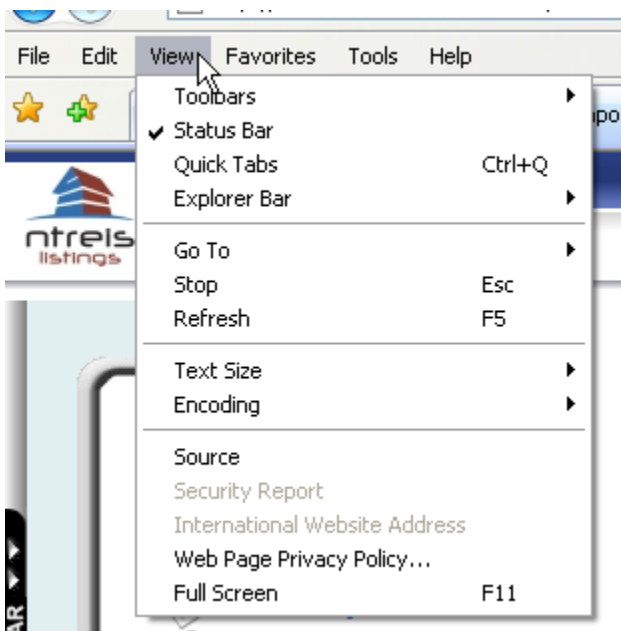


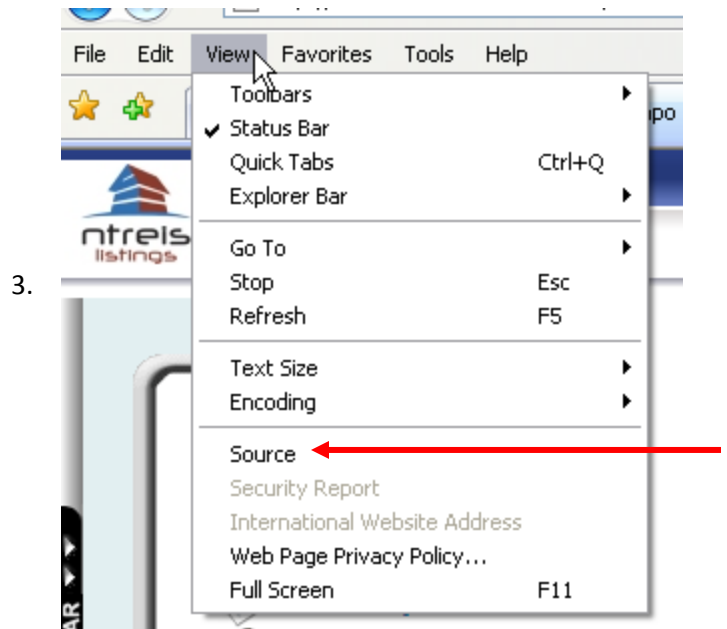


## FINDING THE WEB SERVER WHERE YOU ARE LOGGED IN

1. Access the "View" dropdown in Internet Explorer



2. Click on "Source"



3. Read the 4<sup>th</sup> line down in the Notepad text box that opens



A screenshot of a Notepad window titled 'default[1] - Notepad'. The text content is as follows:

```

<!-- Script: /default.aspx -->
<!-- Host: ntreisweb10.marketlinx.com -->
<!-- Server: 66.193.127.70:80 -->
<!-- Machine: NTREISWEB10 (66.193.127.70) -->
<!-- User: 7797398 -->
<!-- UserAgent: Mozilla/4.0 (compatible; MSIE 7.0; windows NT 5.1; .NET CLR 1.1.4322) -->
<!-- Date: 1/24/2007 9:27:14 AM -->
<!-- Version: Skingine Version 2.0.2463.14838 -->
<!-- Evolution: 1.0.0.102 -->
<!-- Page: efb37d1e-13d9-4cac-9504-f8d88abe7ef9 -->
<!-- skin: Tempo4.Net -->

<style>
    .SNlinkDOWN {font-family:Arial; font-size:9pt; font-weight:normal; text-decoration:n
</style><style>
  
```

A red arrow points to the 4th line of the code, which is: `<!-- Machine: NTREISWEB10 (66.193.127.70) -->`

Your MLS Provider Association can provide more support/training.  
[Contact your Association](#)