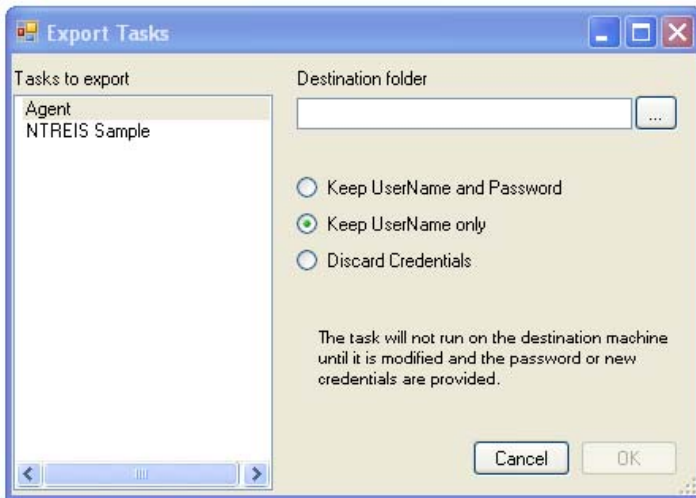


## Converting RETS Connector Tasks to the new NTREIS RETS Server

As part of the move from the existing RETS servers to the new RETS servers, you will need to point your client to the new RETS server. If you are using RETS Connector as your client, the following information may help you move your tasks to the new RETS Servers.

To export a task In RETS Connector go to Task -> Export

Select the task you need to export, choose the destination folder and click OK. You have options for keep the username and password.



To import a task in RETS Connector go to Task -> Import

Select the task you want to import. In the Server drop down menu you can choose what server to run the task on. Click Import Task. For the new NTREIS RETS Servers, use this server:

<http://ntreisrets.mls.ntreis.net/rets/login>

