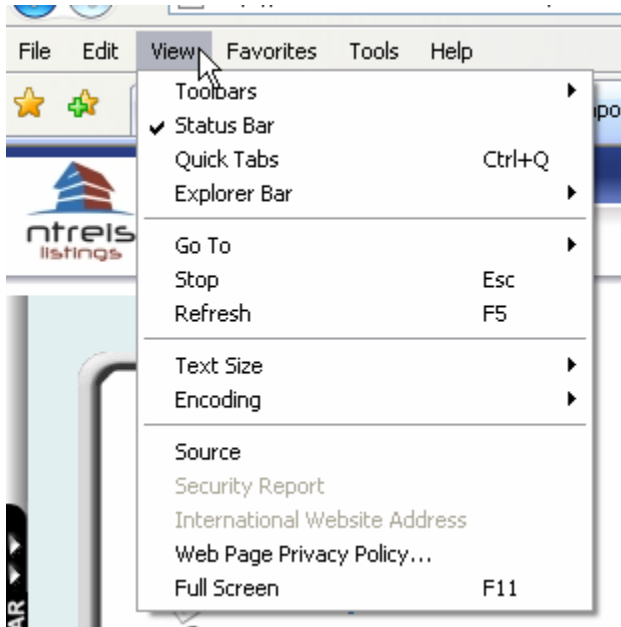


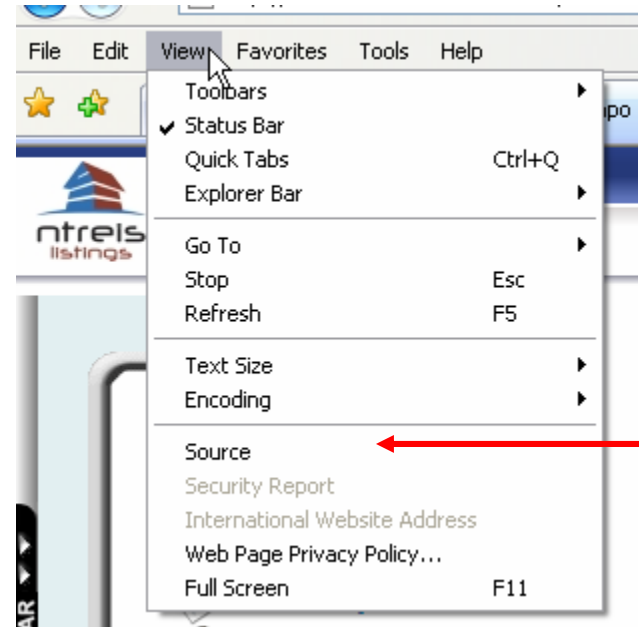
NTREIS Listings/Tempo

How to Determine which Web Server You're Working on

1. Access the "View" drop-down in Internet Explorer



2. Click on "Source"



3. Read the 4th line down in the Notepad text box that opens

A screenshot of a Notepad window titled 'default[1] - Notepad'. The text inside shows HTTP headers. A red arrow points to the 4th line, which is the 'Server' header. The headers are: <!-- Script: /default.aspx -->, <!-- Host: ntreisweb10.marketlinx.com -->, <!-- Server: 66.193.127.70:80 -->, <!-- Machine: NTREISWEB10 (66.193.127.70) -->, <!-- User: 7797398 -->, <!-- UserAgent: Mozilla/4.0 (compatible; MSIE 7.0; windows NT 5.1; .NET CLR 1.1.4322) -->, <!-- Date: 1/24/2007 9:27:14 AM -->, <!-- version: Skingine version 2.0.2463.14838 -->, <!-- Evolution: 1.0.0.102 -->, <!-- Page: efb37d1e-13d9-4cac-9504-f8d88abe7ef9 -->, <!-- skin: Tempo4.Net -->. Below the headers is a <style> block with a .SNlinkdown class definition.

```
File Edit Format View Help
<!-- Script: /default.aspx -->
<!-- Host: ntreisweb10.marketlinx.com -->
<!-- Server: 66.193.127.70:80 -->
<!-- Machine: NTREISWEB10 (66.193.127.70) -->
<!-- User: 7797398 -->
<!-- UserAgent: Mozilla/4.0 (compatible; MSIE 7.0; windows NT 5.1; .NET CLR 1.1.4322) -->
<!-- Date: 1/24/2007 9:27:14 AM -->
<!-- version: Skingine version 2.0.2463.14838 -->
<!-- Evolution: 1.0.0.102 -->
<!-- Page: efb37d1e-13d9-4cac-9504-f8d88abe7ef9 -->
<!-- skin: Tempo4.Net -->

<style>
    .SNlinkdown {font-family:Arial; font-size:9pt; font-weight:normal; text-decoration:n
</style><style>
```